

# TSM MUNEO

## MIC Components

R1 - 10K 1/4 watt  
R2 - 100K 1/2 watt  
R3 - 270K 1/4 watt  
R4 - 270K 1/4 watt  
R5 - 51M 1/4 watt  
R6 - 200M  
R7 - 3K 1/4 watt  
R8 - 270K 1/4 watt  
R9 - 51M  
R10 - 1 KM (1G or 1000M)  
R11 - 120K 1/4 watt  
R12 - 120K 1/4 watt  
R14 - 820  $\Omega$  1/4 watt  
R15 - 510K 1/4 watt  
R18 - 820  $\Omega$  1/4 watt  
R19 - 2 M 1/4 watt  
R20 - 2 M 1/4 watt  
R21 - 51 M

C1 - 1 $\mu$ F 400V electrolytic Radial  
C2 - 10n (.01 $\mu$ F) 630V mylar Radial (Red)  
C3 - 22n (.022 $\mu$ F) 630V poly Radial (Blue)  
C4 - 1000pf (.001 $\mu$ F) 630V polystyrene axial  
C5 - 22n (.022 $\mu$ F) 630V poly Radial (Blue)  
C6 - 100 $\mu$ F 25V electrolytic Radial  
C7 - 104Z (.1 $\mu$ F) small Radial poly (Blue)  
C8 - 1 $\mu$ F 400V electrolytic Radial  
C9 - 1 $\mu$ F 400V electrolytic Radial  
C10 - 22n (.022 $\mu$ F) 630V Poly Radial  
CA - Located on Back of Circuit Board  
22n (.022 $\mu$ F) 630V poly radial (Blue)

Potentiometer - 100K

Tube V1 - 12AX7B

Tube V2 - 12AU7

## Power Supply Components

R1 - 6.8K 1/2 watt  
R2 - 6.8K 1/2 watt  
R3 - 2.2K 1/2 watt  
R4 - 2.2K 1/2 watt  
R5 - 2.2K 1/2 watt  
R6 - 1.5M 1/4 watt 1%  
R15 - 2 $\Omega$  1 watt

C1 - 22 $\mu$ F 400V electrolytic  
C2 - 22 $\mu$ F 400V electrolytic  
C3 - 22 $\mu$ F 400V electrolytic  
C4 - 22 $\mu$ F 400V electrolytic  
C5 - 22 $\mu$ F 400V electrolytic  
C6 - 22 $\mu$ F 400V electrolytic  
C7 - 220n (.22 $\mu$ F) 400V mylar  
C8 - 2200 $\mu$ F 25V electrolytic  
C9 - 10,000 $\mu$ F 25V electrolytic  
C10 - 10,000 $\mu$ F 25V electrolytic

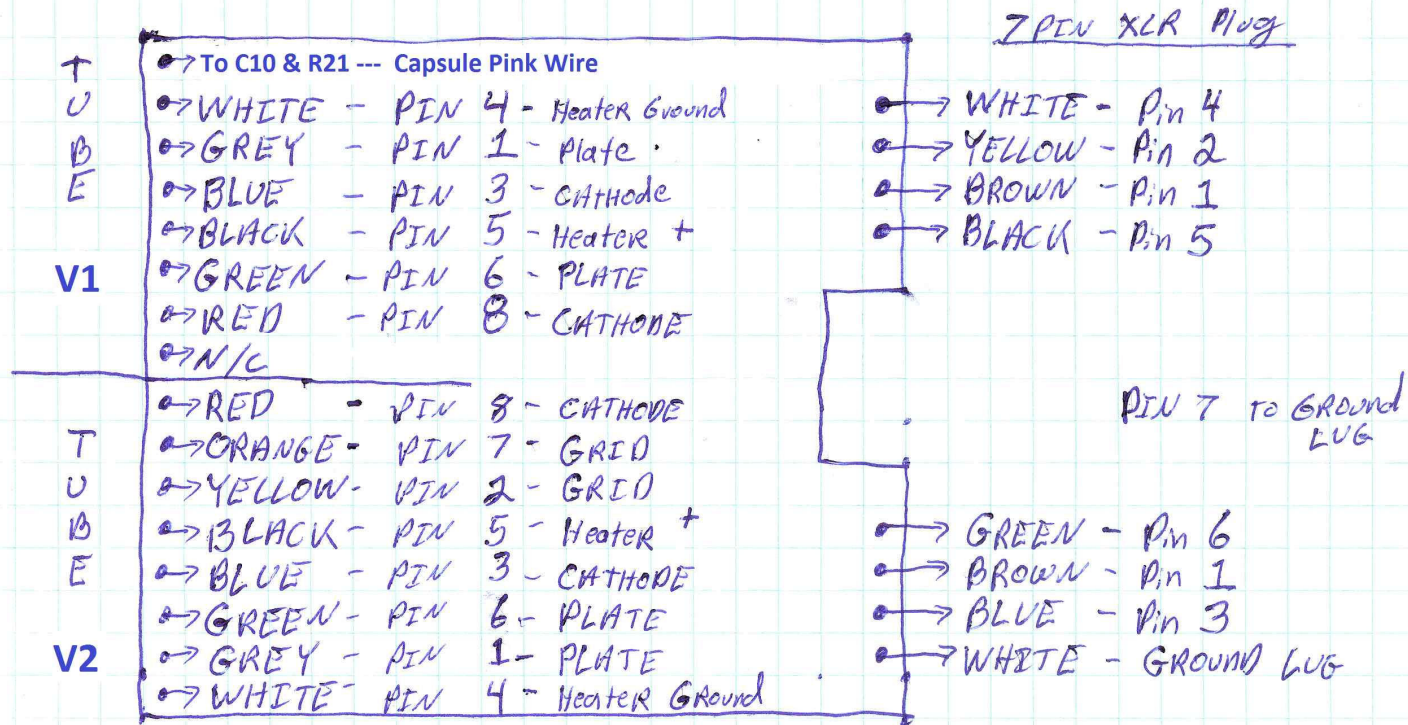
D1-D4 - 1N4007

D7-D11 - 1N4007

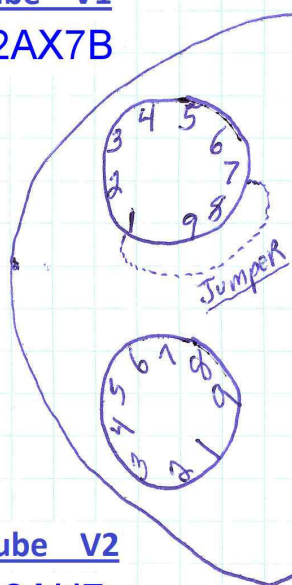
D5-D6 - 1N4762A 92V Zener

IC1 - KA7810 10V Regulator

TSM MUNEO



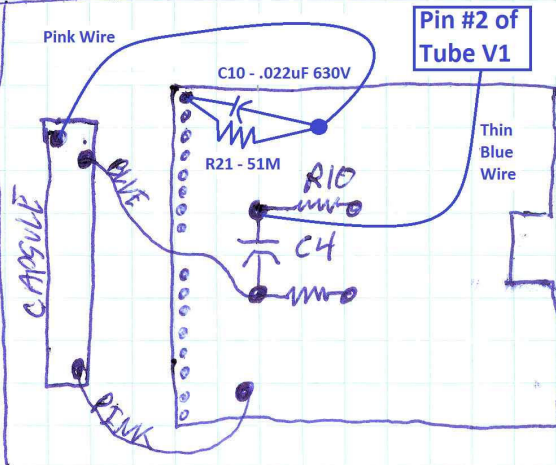
Tube V1  
12AX7B



- 1 - GREY WIRE / Also jumped to PIN #7
- 2 - Small blue wire to C4 and R10
- 3 - BLUE WIRE
- 4 - WHITE WIRE
- 5 - BLACK WIRE
- 6 - GREEN WIRE
- 7 - Jumped to Pin #1 with Green wire
- 8 - RED WIRE
- 9 - NO connection

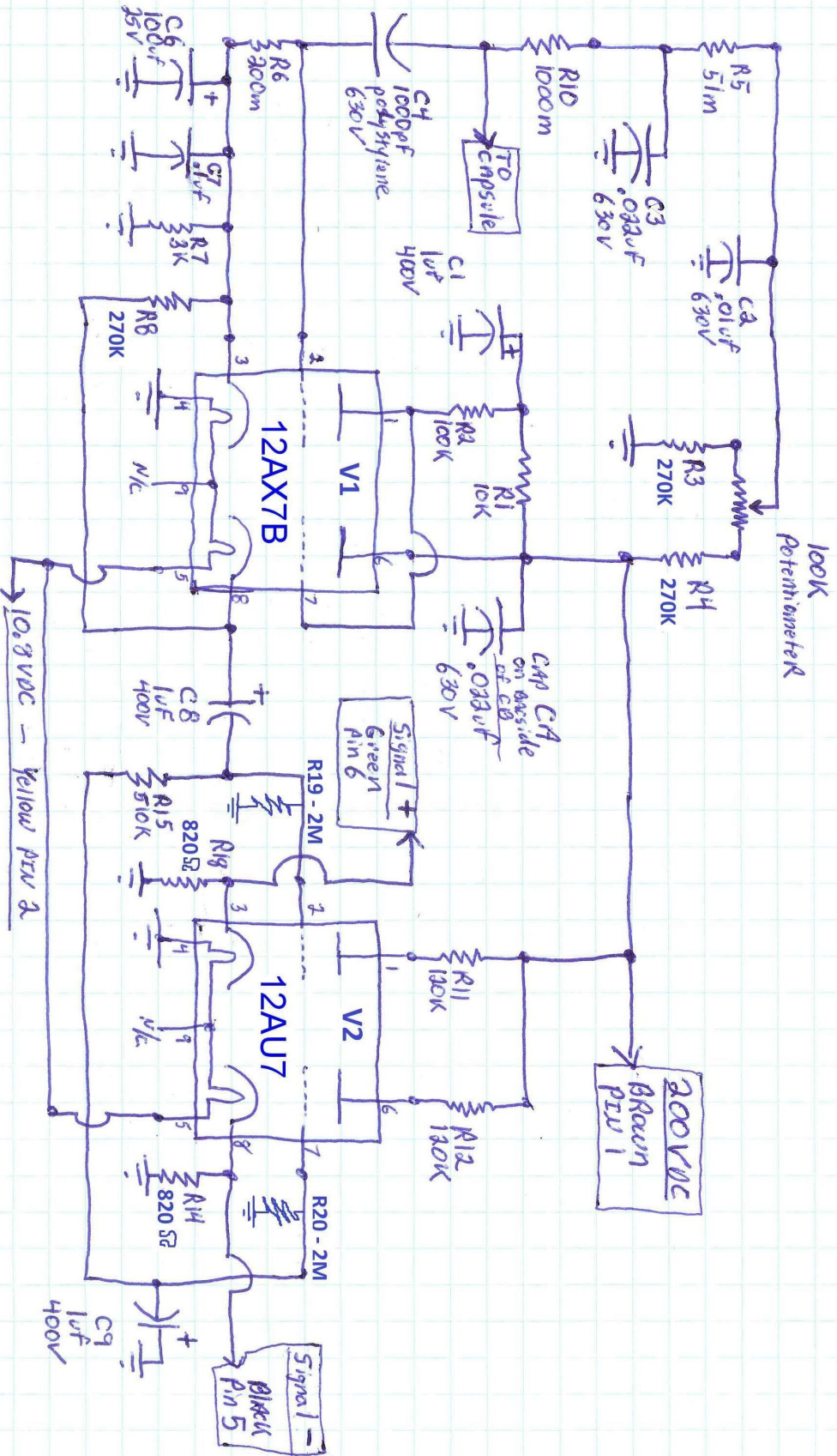
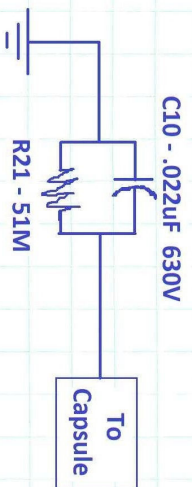
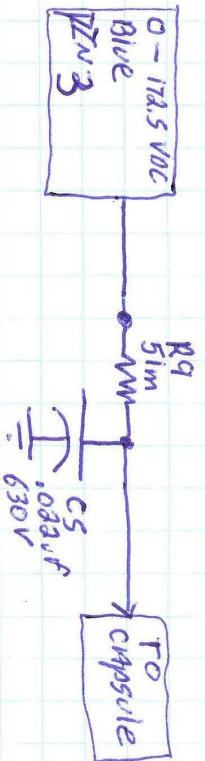
Tube V2  
12AU7

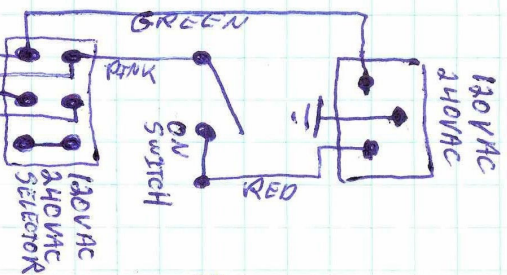
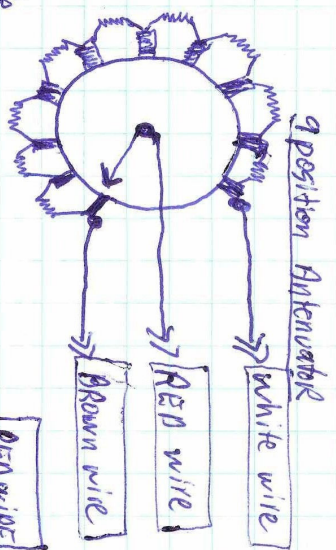
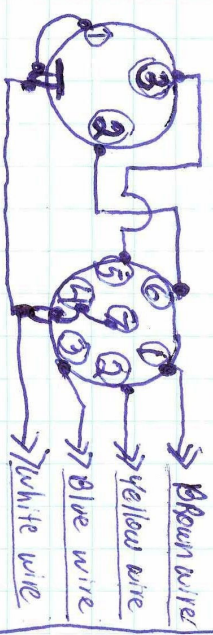
- 1 - GREY WIRE
- 2 - YELLOW WIRE
- 3 - BLUE WIRE
- 4 - WHITE WIRE
- 5 - BLACK WIRE
- 6 - GREEN WIRE
- 7 - ORANGE WIRE
- 8 - RED WIRE
- 9 - NO connection





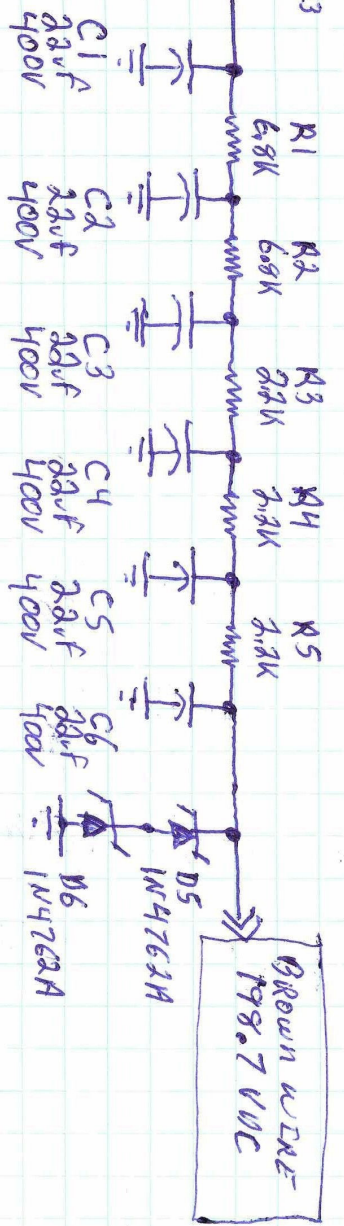
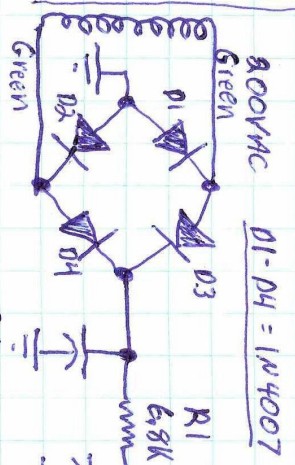
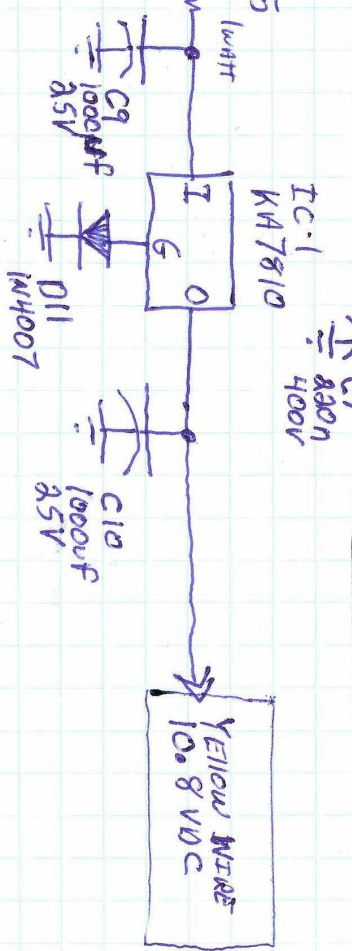
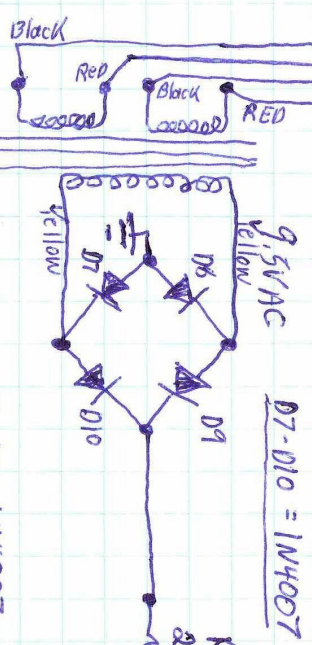
# ISM MUNE0





9 Position Switch Voltages

Position	RED WIRE Voltage	Blue wire Voltage
1-	0.0	0.0
2-	24.2	21.07
3-	48.2	42.0
4-	72.5	63.1
5-	96.4	84.0
6-	120.7	105.0
7-	145.8	126.8
8-	171.7	149.1
9-	199.0	172.4



TSM  
MUNEO



